



Daphne Anastassiou Mustakis



Daphne Anastassiou Mustakis (Viña del Mar, Chile, 1955) is an interdisciplinary artist whose practice is grounded in visual and material experimentation that extends beyond conventional academic frameworks. Born into a Greek family deeply engaged with culture and the arts, she pursued higher education at Pierce College (Athens, Greece), Alvescot College (London, England), and the Pontifical Catholic University of Chile (Santiago, Chile), where she earned a degree in psychology in 1980.

Her earliest explorations in art-making date back to childhood, when she worked with enamel on metal and techniques involving chemical etching in her mother's atelier. She later turned to ceramics in 1982, and her first canvases emerged in 1991. From 2006 onward, painting became her primary focus. She also pursued drawing studies under the guidance of artists Carmen Silva and Jaime León.

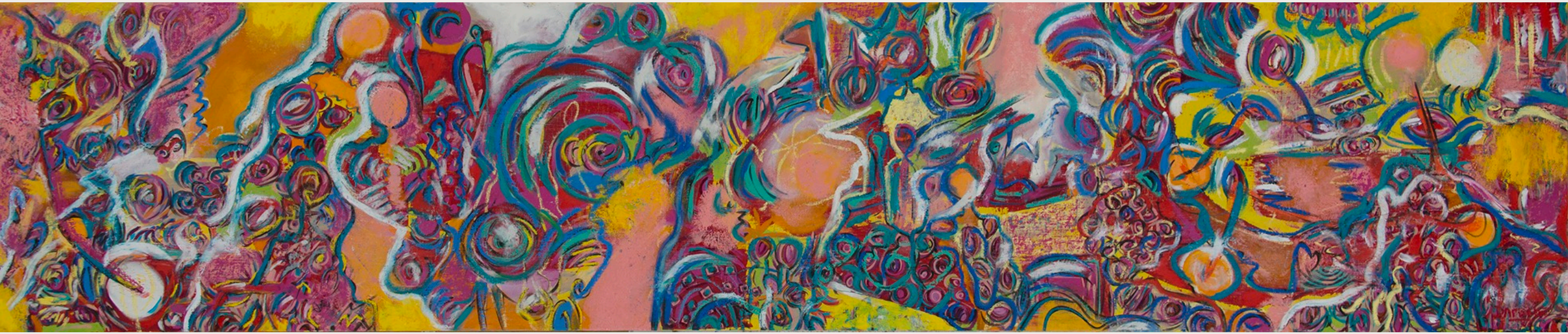
Her practice encompasses mixed-media painting, primarily using oil and acrylic, and extends to large-scale sculptural works in a variety of materials, including resin, wood, marble, and metal. This is complemented by an ongoing formal exploration ranging from mosaic craftsmanship to technological experiments in digital animation. Her prolific creative output is grounded in an understanding of human nature, the depth and expansion of consciousness, and human potential, engaging closely with principles of transpersonal psychology.

Her first solo exhibition, *Agapi* (“Love” in Greek), was presented in 2009 at Artespacio Gallery, showcasing works created between 1991 and 2009. She has exhibited both individually and collectively throughout Chile in prominent venues such as CV Galería, GAM Centro Cultural Gabriela Mistral, and Feria Ch.ACO, among others. Internationally, she has exhibited at venues and fairs including FAIMART in Madrid (Spain), Centro Cultural Borges in Buenos Aires (Argentina), Museo Ralli in Punta del Este (Uruguay), Galería OCCO in Madrid (Spain), Galerie Colette Dubois in Paris (France), Saphira & Ventura Gallery in Dubai (United Arab Emirates), Art Basel Miami Beach 2019 with Curators Voice Art Projects (USA), Saphira & Ventura Gallery in New York (USA), and Galería Jorge Alcolea in Madrid, as well as in England, Austria, Germany, China, and Egypt.

In addition to her visual work, she has explored themes of self-knowledge and emotional healing through writing, publishing the book *Somos amor* (“We Are Love”) in 2000. She serves as vice president of the Gabriel y Mary Mustakis Foundation, an organization that supports the cultural, intellectual, and creative development of children from underserved communities. She presides over the Agapi Foundation, which promotes creative development through collective singing, music, and visual arts, while fostering well-being and inclusion, guided by the principle that social change begins with individual transformation.

The artist lives and works in Santiago, Chile, and is represented by Galerie Colette Dubois.





## STATEMENT

I understand creation as a pathway capable of connecting the human with the universe and the visible with the invisible. Through forms, colors, and volumes, the possibility of communication arises, which my visual work seeks to achieve.

I perceive the world as a constellation of elements in constant movement. This enables me to engage simultaneously and in parallel with stain, drawing, form, counterform, emptiness, and fullness, capturing a subtle reality in continuous transformation, an ephemeral flow I seek to grasp and translate through color and its vibration.

Painting draws me inward, into my own being. From the silence of the blank canvas or sheet of paper, form and color flow freely, emanating from within and unfolding beyond time while opening a space for encountering the Other when the work is exhibited.

I like to think of my work as belonging to what is called “conscious art.” In the face of the growing intellectualization of artistic experience, I appeal to the most essential form of perception: color is light, and light moves our senses through its healing power. Alongside this, a fundamental energy nourishes and guides me, urging me to bring itself into presence to highlight its value and power, and the urgent need to recover it in a chaotic and superficial world. This energy is feminine energy as a transformative force of being.

From this inner universe, shaped by intimate and everyday experiences, artistic practice becomes an invitation to let ourselves flow, to awaken consciousness, and to move beyond the structures of the mind. A series of binary relations emerge from my experience, each term requiring and sustaining the other: subjectivity/otherness, society/community, and structure/constellation. Together, they form a personal and singular imagery, characterized by intuition and silence, capable of establishing connections across different scales of consciousness and evolutionary dimensions of the human.

My work proposes genuine perspectives that diverge from traditional interpretations in art history. Having received no formal training in the arts, my entire practice is grounded in exploring materials, supports, and mixtures. This opens up multiple possibilities that I approach without preconceptions in order to reach the viewer. Consequently, the techniques I use develop spontaneously and are fully experimental.

This has led me to work with various mediums and formats, such as papyrus, different types of fabric, wood, acrylic sheets, oil paint, acrylic paint, pastels, and automotive paints. I use different tools for painting, including brushes, spatulas, cloths, sponges, and my own hands, which for a long time were my only working instrument—seeking, through materiality, to reveal what is undoubtedly part of the mystery underlying each work.

Successive layers of material on the support generate superimposed worlds, like physical and metaphysical dimensions, which I later define and bring into communication through pencil drawings.

Layering of almost infinite planes in painting led me to experiment with volume in large-scale works, extending spatial projection beyond the planar forms inscribed on the surface. I intuitively arrived at sculpture, where my material choices also arise from experimentation and from my own research into matter and its possibilities. These sculptures seek to become Others with whom to engage in dialogue through the intimacy of everyday conversation and by allowing oneself to be enveloped by tangible, embraceable forms.

My artistic production is marked by an open inquiry that moves from the graphic language of glass mosaics to digital animation as ways of narrating and connecting. Within these ideas, I seek to construct a personal language that can be understood, considering each piece as part of an alphabet of codes rooted in the strength of the feminine and the ability to generate an urgent energy of resilience amidst the current chaos, which is often detached and indifferent.

The Being is at the center of this pictorial adventure and is its protagonist. This being is born, multiplies, and diversifies before our eyes. The human being is the starting point and the primal creation that gives rise to a diverse, chromatic universe, held together only loosely by a simple yet skillful black line. The human and the divine, here and now. A woman, a man, a multitude, a vibration.

Concepción Balmes

## INTIMACY

OTHERNESS ALTERITY CHRONICLE



**La Sombra**  
**1996**

**Técnica mixta sobre papel**  
**47 x 36 cm.**

**The Shadow**  
**Mixed media on paper**  
**18.50 x 14.17 inch**



**Mujeres**  
2008

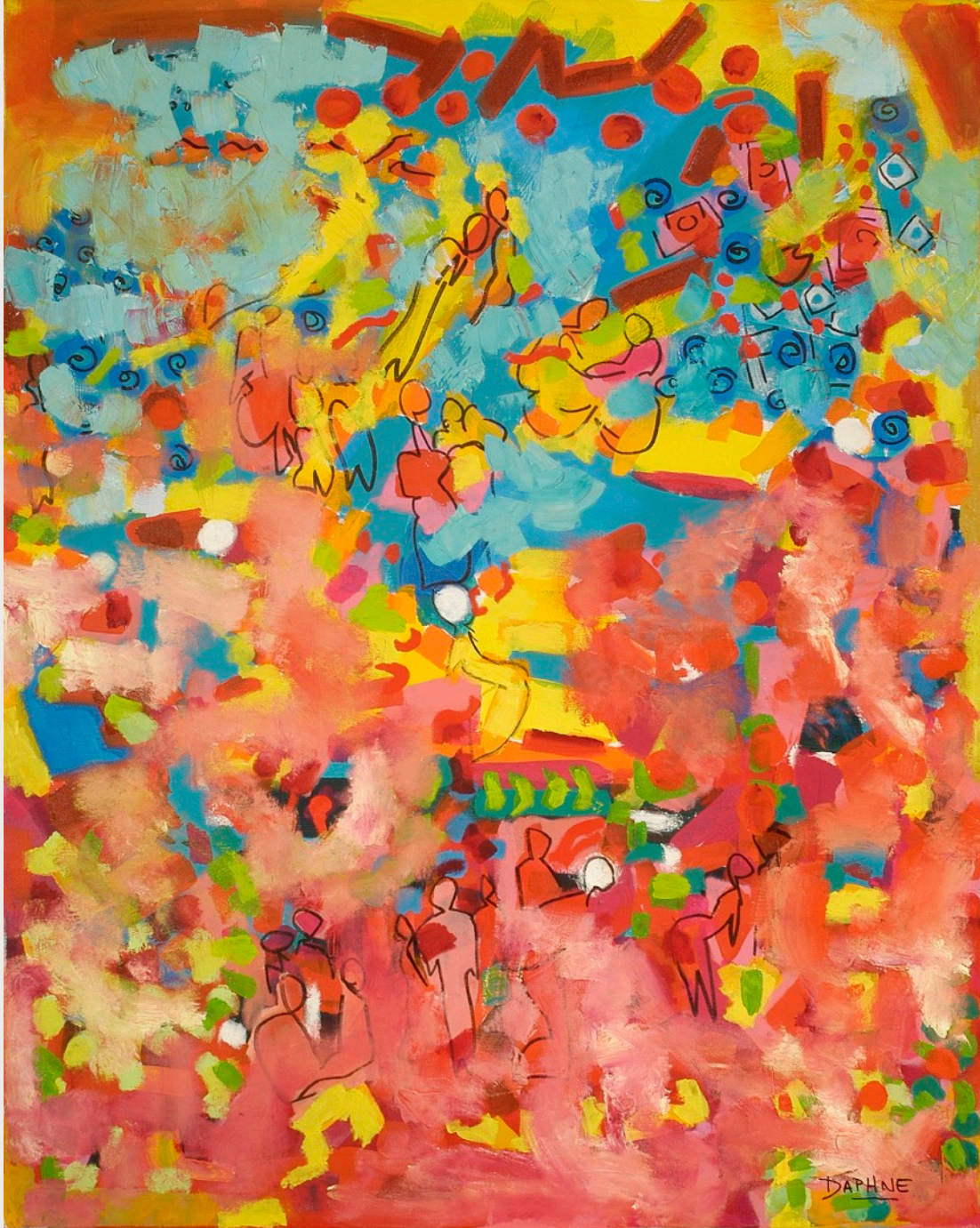
**Técnica mixta sobre papel**  
58 x 50 cm.

**Women**  
Mixed media on paper  
22.83 x 19.68 inch



**Nuevo Mundo**  
2009  
Técnica mixta sobre tela  
120 x 203 cm.

**New World**  
Mixed media on canvas  
47.24 x 79.92 inch



Vida  
2009  
Técnica mixta sobre tela  
150 x 120 cm.

Life  
Mixed media on canvas  
59.05 x 47.24 inch



**Mundos Paralelos**  
2010  
Técnica mixta sobre tela  
140 x 200 cm.

Parallel Worlds  
Mixed media on canvas  
55.11 x 78.7 inch



Vida Loca  
2012

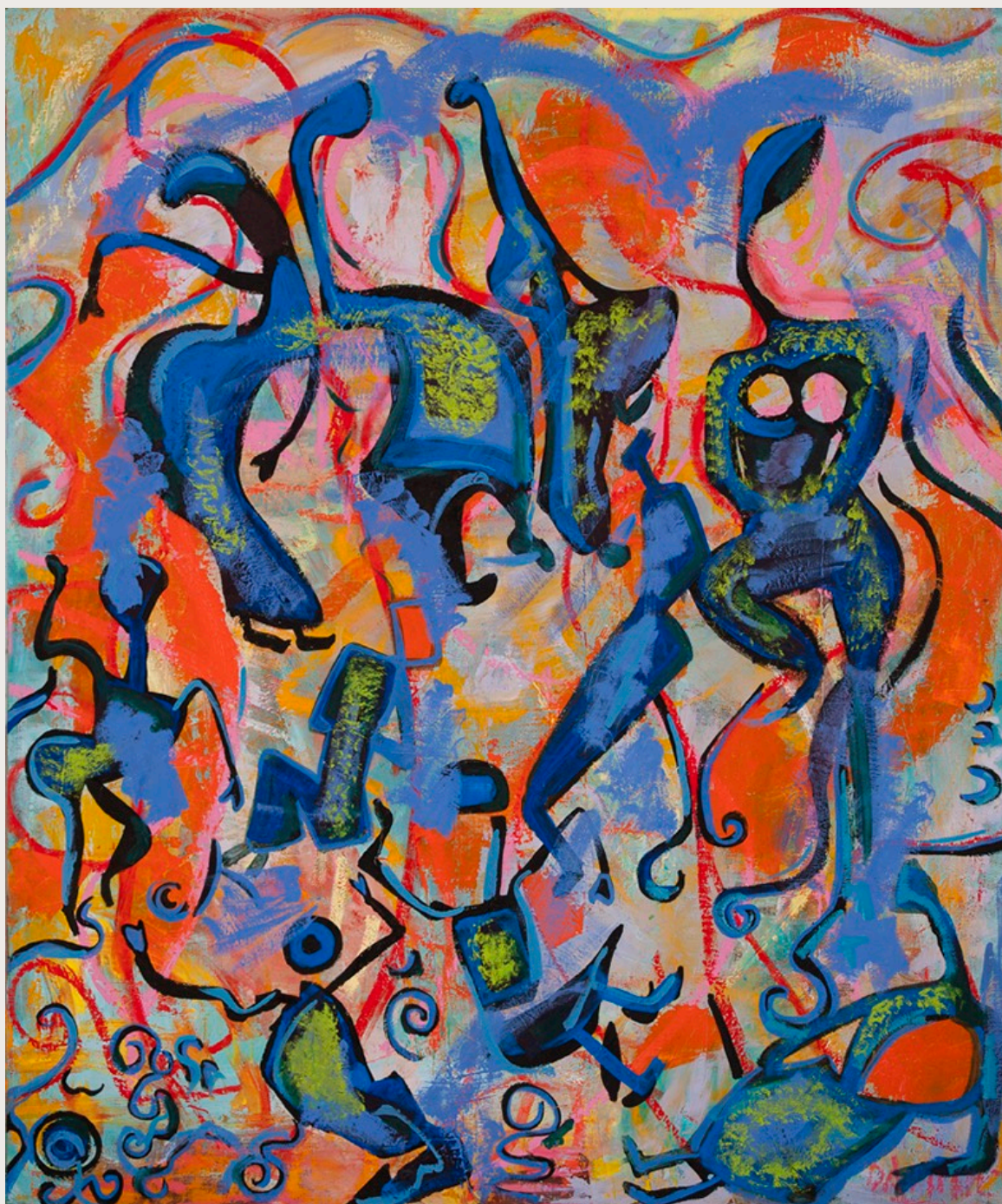
Técnica mixta sobre tela  
181 x 140 cm.

Crazy Life  
Mixed media on canvas  
71.3 x 55.1 inch



**Admiración**  
2012  
Técnica mixta sobre tela  
230 x 150 cm.

Admiration  
Mixed media on canvas  
90.5 x 59 inch



Libertad

2012

Técnica mixta sobre tela

120 x 100 cm.

Freedom

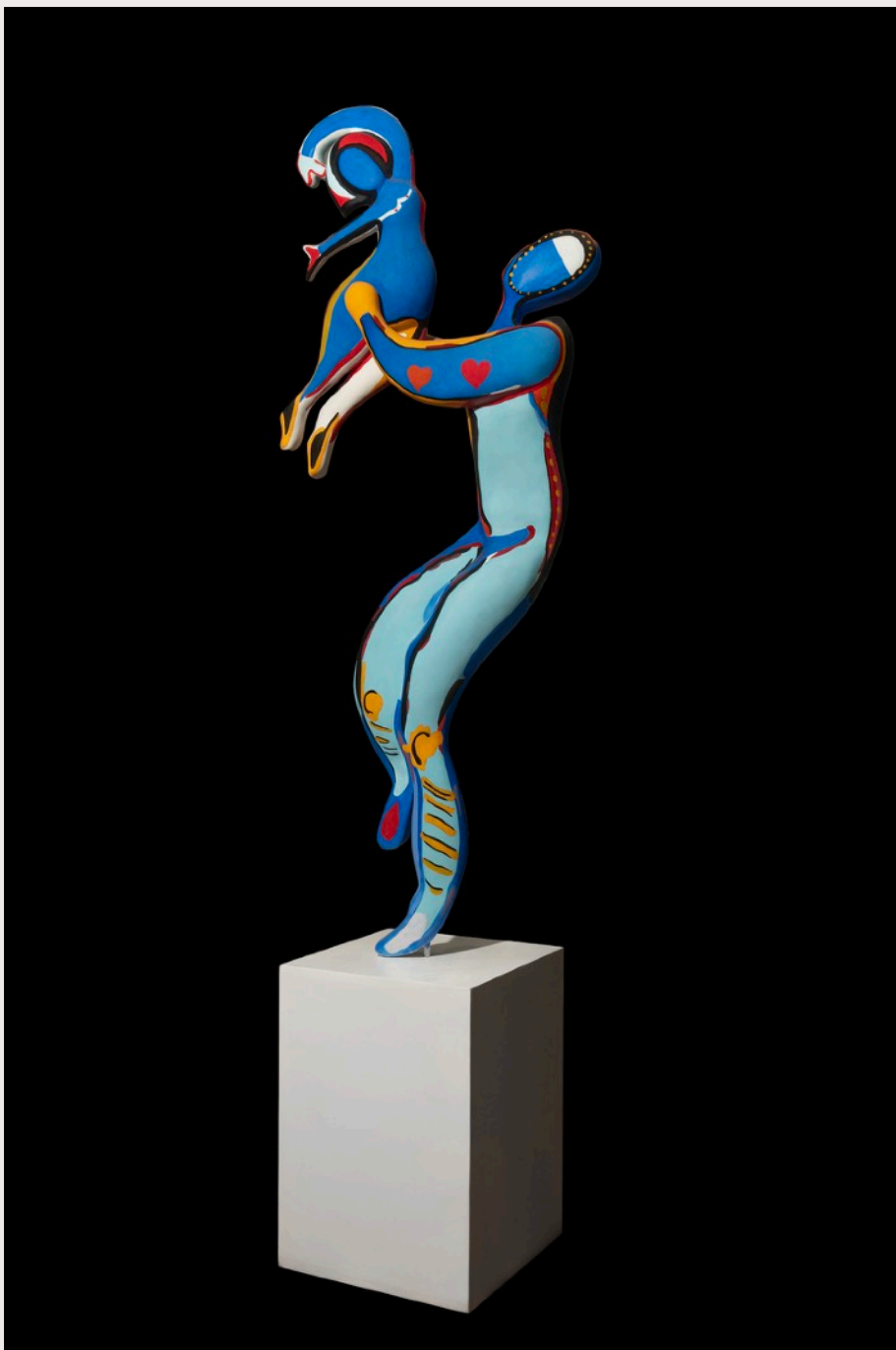
Mixed media on canvas

46.8 x 39 inch



Onírico 1  
2015  
Técnica mixta  
230 x 150 cm.

Oneiric 1  
Mixed media on canvas  
96 x 59,1 inch



Joy 3  
2014 – 2015  
Resina pintada  
175 x 65 x 25 cm.  
Base 62 x 45 x 45 cm.

Joy 3  
Painted resin  
68.89 x 25.59 x 9.84 inch  
Base 24.4 x 17.71 x 17.71 inch



**La Sirena**  
2016 - 2017  
Resina  
186 x 226 x 7 cm

**The Mermaid**  
Resin  
73.22 x 88.97 x 2.75 inch



**La Sombra**  
2019 – 2023

**Resina**

**Figura blanca 327 x 120 x 200 cm.**

**Base 92 x 100 x 58 cm.**

**Figura negra 300 x 115 x 160 cm.**

**Base 108 x 60 x 97 cm.**

**The Shadow**

**Resin**

**White figure 128.74 x 47.24 x 78.74 inch**

**Base 36.22 x 39.37 x 22.83 inch**

**Black figure 118.11 x 45.27 x 62.99 inch**

**Base 42.51 x 23.62 x 38.18 inch**



**Pareja**

**2024**

**Aleación resina y carbonato de calcio**

**120 x 30 x 30 cm.**

**Base 26 x 40 cm.**

**Couple**

**Resin and calcium carbonate**

**47.24 x 11.81 x 11.81 inch**

**Base 10.24 x 15.74 inch**

The value she placed on observing the being arose from a sensibility that went beyond the religious, the political, and the economic. Her interest in portraying it lay in capturing not only the essence of the person, but also the bond between human nature and landscape, the architecture, or, more broadly, the territory itself.

Carlos Navarrete

**SOCIETY**

TERRITORY COMMUNITY HUMAN



Acogida  
1996

Técnica mixta sobre papel  
36 x 26 cm.

Embracing  
Mixed media on paper  
14.17 x 10.23 inch



**Hábitat**  
2008  
Técnica mixta sobre papel  
77 x 59 cm.

**Habitat**  
Mixed media on paper  
30.31 x 23.22 inch



Invierno  
2009  
Técnica mixta sobre tela  
100 x 140 cm.

Winter  
Mixed media on canvas  
39 x 55.11 inch



Intercambio  
2010  
Técnica mixta sobre tela  
100 x 80 cm.

Exchange  
Mixed media on canvas  
39 x 31.2 inch



**Encuentros II**  
2011  
Técnica mixta sobre tela  
150 x 280 cm.

**Encounters II**  
Mixed media on canvas  
59.06 x 110.23 inch



Juego

2011

Técnica mixta sobre tela

180 x 140 cm.

Game

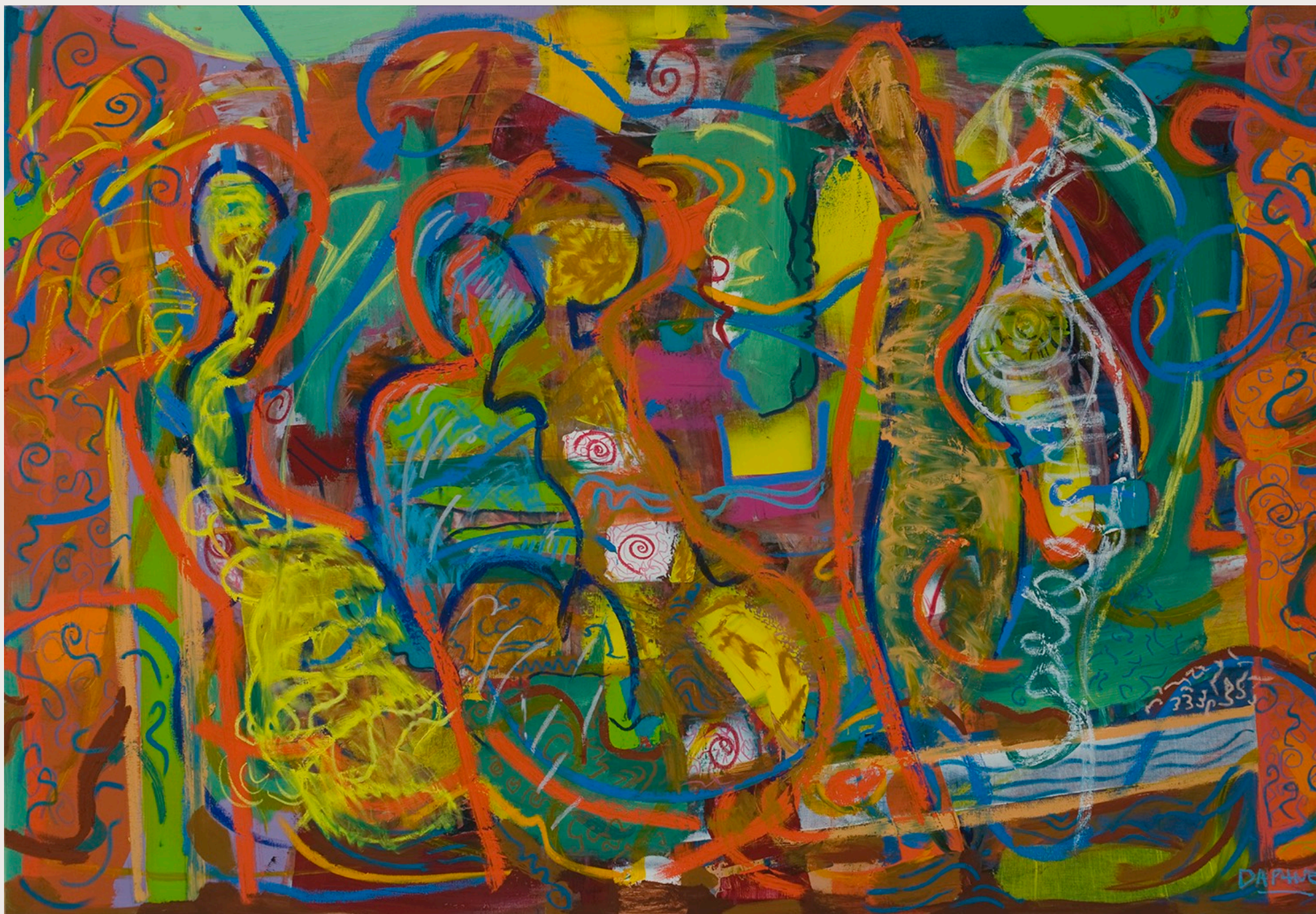
Mixed media on canvas

70.86 x 55.11 inch



Contención II  
2011  
Técnica mixta sobre tela  
150 x 230 cm.

Containment II  
Mixed media on canvas  
59.06 x 90.5 inch



Vibración Positiva

2011

Técnica mixta sobre tela

150 x 230 cm.

Positive Vibration

Mixed media on canvas

59.06 x 90.5 inch



Convocatoria II  
2012  
Técnica mixta sobre tela  
140 x 180 cm.

Convocation II  
Mixed media on canvas  
54.6 x 70.2 inch



Interconecciones  
2012  
Técnica mixta sobre tela  
150 x 230 cm.

Interconnections  
Mixed media on canvas  
59.06 x 90.5 inch



Fusión  
2013  
Técnica mixta sobre tela  
100 x 120 cm.

Fusion  
Mixed media on canvas  
39.3 x 47.2 inch



Árbol de la Vida  
2014 - 2015  
Madera aglomerada  
199 x 204 x 45 cm.

Tree of Life  
Chipboard  
78.34 x 80.31 x 17.71 inch



Bosquejos de la India 2023 Resina y piedra 102 x 203 x 13 cm. Sketches of India Resin and stone 40.15 x 79.92 x 5.11 inch



**Roles**  
**2016 - 2018**

**Resina**  
**109 x 90 x 95 cm.**  
**Base 90 x 70 cm.**

Roles  
Resin  
42.91 x 35.43 x 37.40 inch  
Base 35.43 x 27.55 inch



**Acogida**

**2016 - 2018**

**Resina**

**103 x 43 x 41 cm.**

**Base 90 x 40 x 40 cm.**

**Embracing**

**Resin**

**40.55 x 16.92 x 16.14 inch**

**Base 35.43 x 15.74 x 15.74 inch**



**Madonna**  
**2018 - 2021**  
**Resina**  
**300 x 280 x 240 cm.**

**Madonna**  
**Resin**  
**118.11 x 110.23 x 94.48 inch**



**Buscando Acuerdos**

**2023**

**Fierro y vidrio**

**228 x 127 x 80 cm.**

**Searching for Agreements**

**Iron and glass**

**89.76 x 50 x 31.49 inch**



**Malabarista**

**2018 – 2021**

**Resina**

**400 x 300 x 200 cm.**

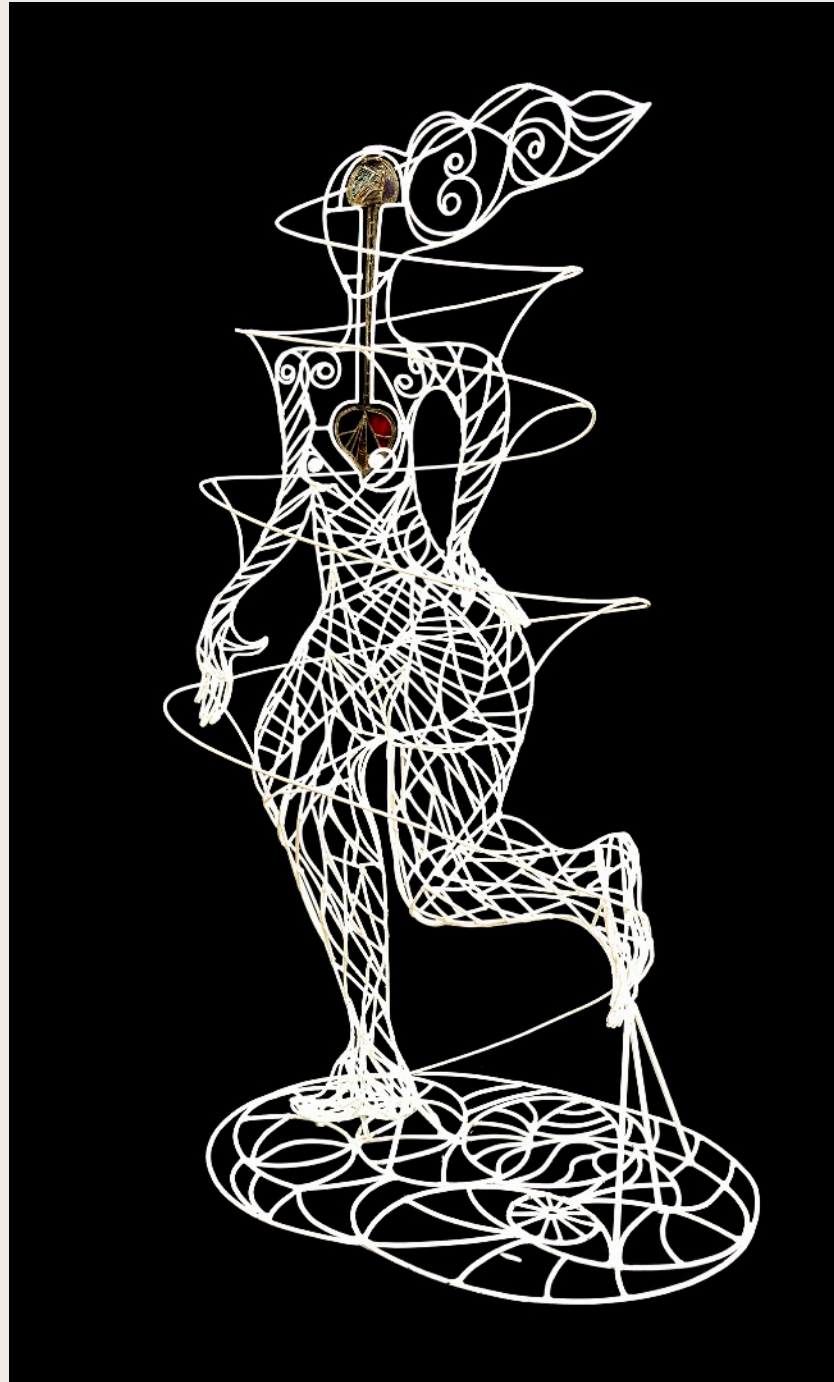
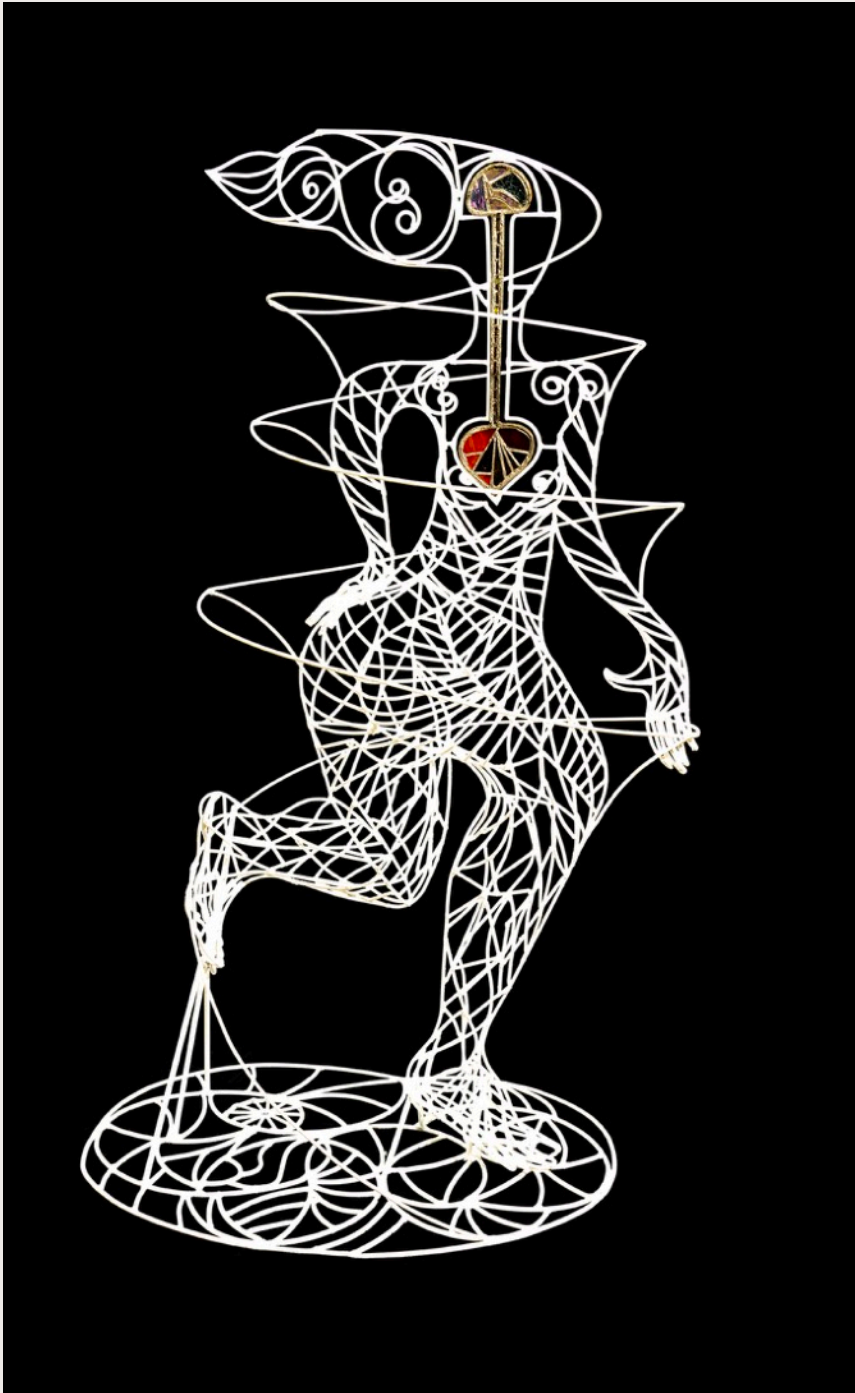
**(medidas variables según montaje)**

**The Juggler**

**Resin**

**157.48 x 118.11 x 78.74 inch**

**(variable dimensions depending on assembly)**



Mente Corazón  
2022  
Fierro  
185 x 110 x 77 cm.

Mind Heart  
Iron  
72.83 x 43.30 x 30.31 inch

Painting has been the trace of what might have been as much as the trace of what might come to be, both marked within a single moment: the present. Painting is the present of all that is possible, whether imagined or tangible, and since the present constrains time, the pictorial support can only be two-dimensional, for it must freeze volumes and spatial movement to render them. To confine painting to the present—that is, to the artist's present—grants infinite freedom in apprehending the universe.

Mario Fonseca

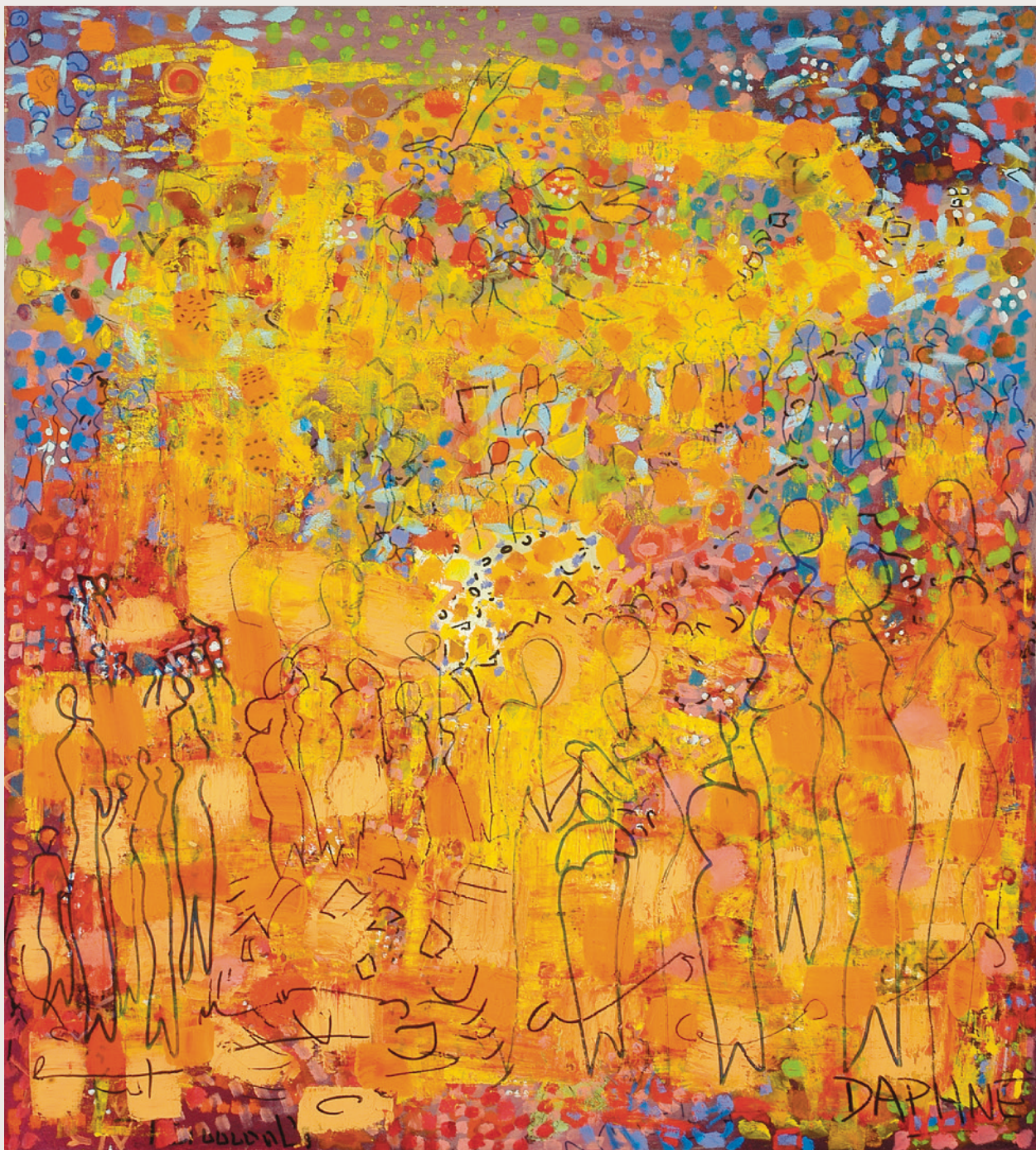
**C O S M I C**

CONSTELATION ASTRAL SIDERAL



**Puente al Infinito**  
1999  
Técnica mixta sobre papel  
92 x 128 cm.

Bridge to Infinit  
Mixed media on paper  
36.22 x 50.39 inch



Alleluia

2007

Técnica mixta sobre papel

120 x 100 cm.

Alleluia

Mixed media on paper

47.24 x 39 inch



Generaciones

2008

Técnica mixta sobre papel

38 x 54 cm.

Generations

Mixed media on paper

14.96 x 21.25 inch



**Energía Vital**  
2011  
Técnica mixta sobre tela  
180 x 140 cm.

Vital Energy  
Mixed media on canvas  
70.86 x 55.11 inch



Vértice  
2011  
Técnica mixta sobre tela  
150 x 230 cm.

Vertex  
Mixed media on canvas  
59.06 x 90.5 inch



Serie viaje al inconsciente I

2014

Técnica mixta sobre tela

150 x 230 cm.

Trip to the Unconscious Series I

Mixed media on canvas

59.06 x 90.05 inch



**Serie viaje al inconsciente V  
2014**

**Técnica mixta sobre tela  
140 x 100 cm.**

**Trip to the Unconscious Series V  
Mixed media on canvas  
55 x 39 inch**



**Liberación 6**  
**2014**  
**Técnica mixta sobre tela**  
**170 x 152,5 cm.**

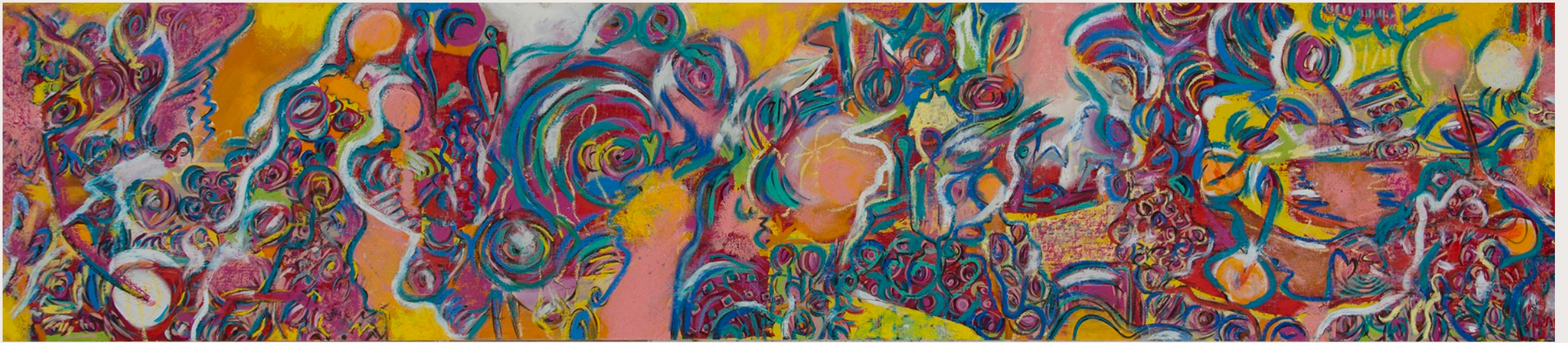
**Release 6**  
**Mixed media on canvas**  
**66.9 x 60 inch**



Serie viaje al inconciente. Sueño  
2014

Técnica mixta sobre tela  
100 x 80 cm.

Trip to the Unconscious Series. Dream  
Mix media on canvas  
39 x 31.5 inch



Onírico 4 2015 Técnica mixta sobre tela 144 x 450 cm. Oeniric 4 Mixed media on canvas 56.69 x 177.17 inch



**Esfera de Luz**

**2016 – 2019**

**Resina**

**106 x 108 x 108 cm.**

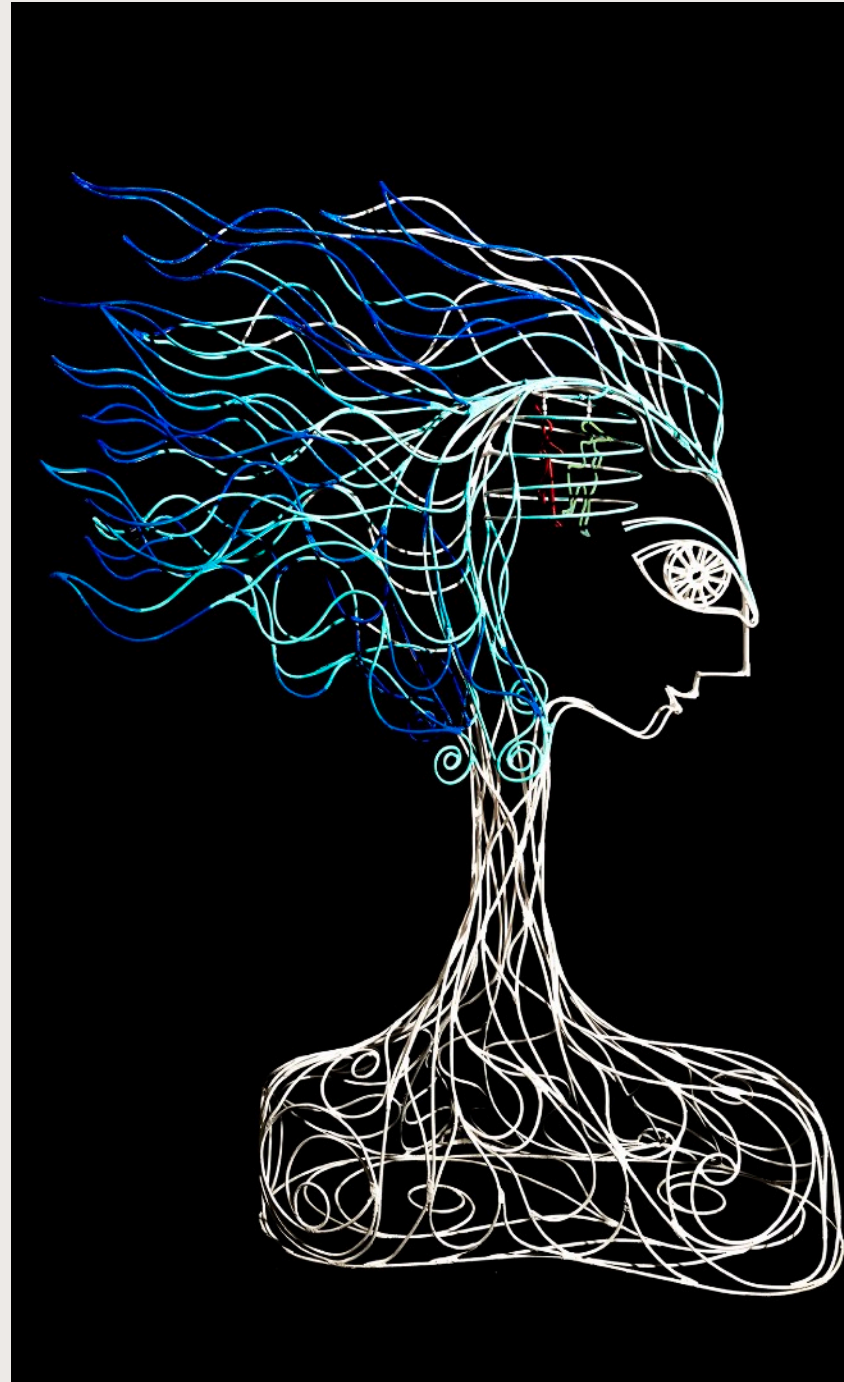
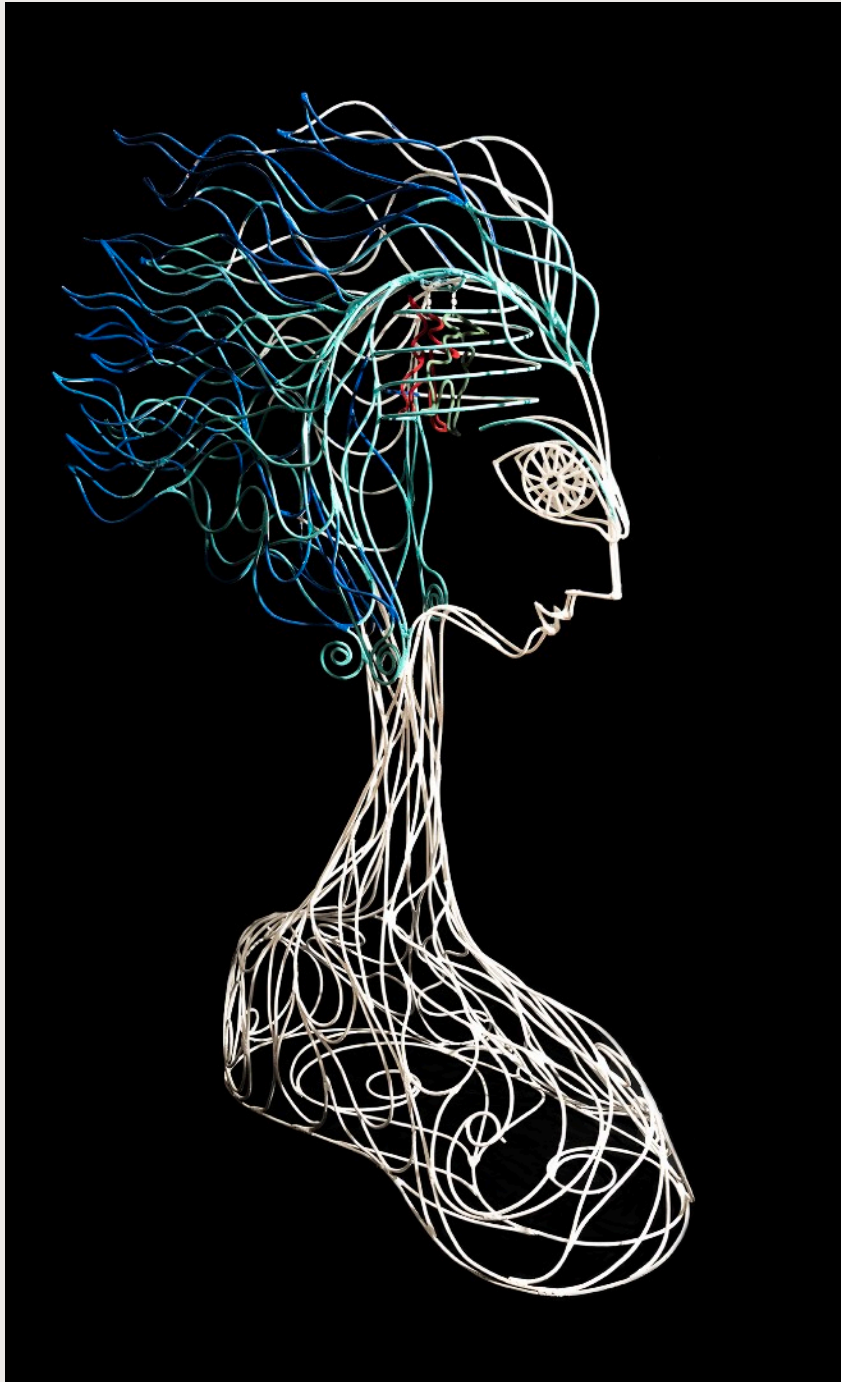
**Base 90 x 70 cm.**

**Sphere of Light**

**Resin**

**41.73 x 42.51 x 42.51 inch**

**Base 35.43 x 27.55 inch**



Integración Hemisferios

2020

Fierro

185 x 130 x 70 cm.

Hemispheres Integration

Iron

72.83 x 51.18 x 27.57 inch



**La Diosa**  
2020 – 2023  
Resina  
280 x 245 x 420 cm.

**The Goddess**  
Resin  
110.23 x 96.45 x 165.35 inch



<https://daphneanastassiou.com>

<https://www.instagram.com/daphne.anastassiou>

CHILE

+ 56. 931880137

contacto@daphneartist.cl

FRANCE

+ 331. 42 601344

galeriecdubois@wanadoo.fr

SPAIN

+ 34. 604147416

artgallerymoraira@gmail.com

SPAIN

+ 34. 620444321

jorgealcoleaalbero@gmail.com

UNITED STATES

+ 56. 932475550

artist@daphneartist.cl